

P3MBP/ 2kb-PT100

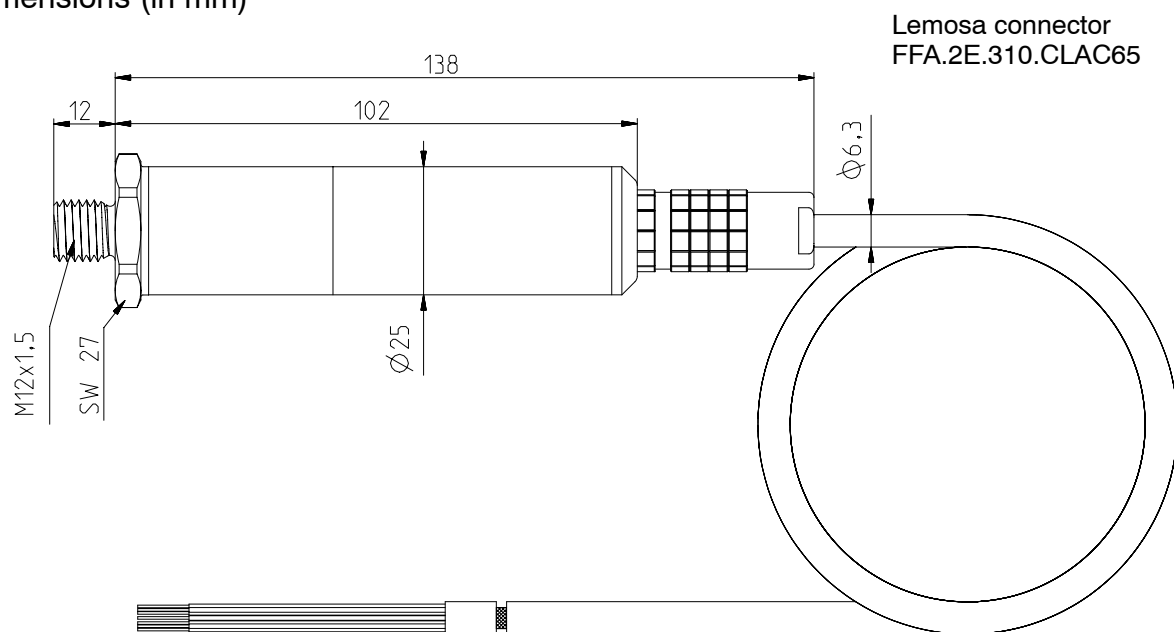
Application-based
transducer for
diesel injection
applications

Special characteristics

- For pressure signals and PT100 signals
- Adapted for
 - high pressures
 - high dynamics
 - high accuracy



Dimensions (in mm)



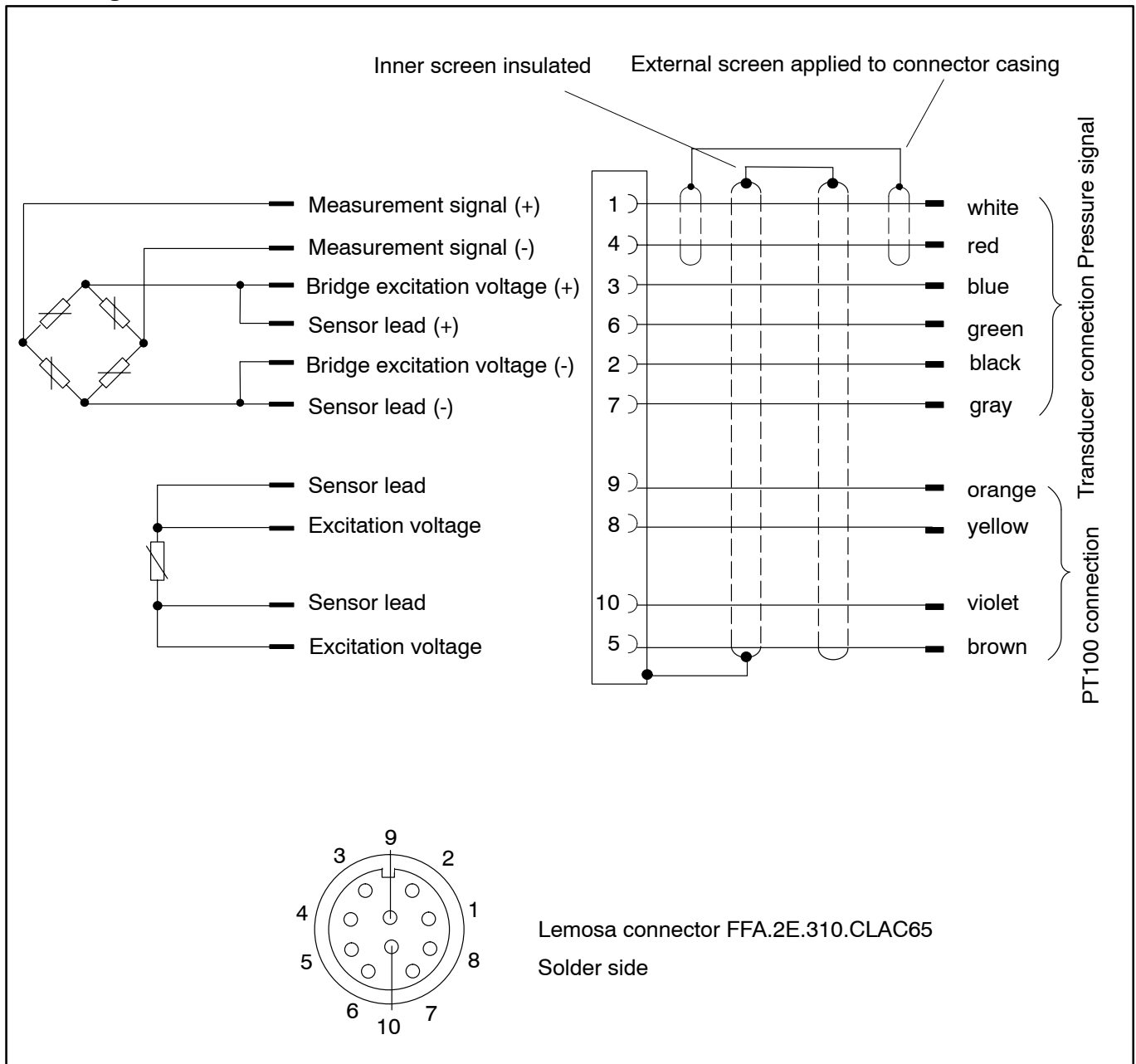
Connection cable 2-9268.0835; 7 m long
(not included in scope of delivery)

Specifications according to DIN 16086

Type		P3MBP/2kb-PT100
Input characteristics		
Accuracy class		0.2
Pressure type		Absolute pressure
Measurement range 0bar ...	bar	2000
Initial value	bar	0
Working range 0 ...	%	150
Overload limit	%	200
Test pressure	%	200
With dynamic loading		
Permissible pressure	%	100
Permissible vibration bandwidth (in accordance with DIN 50 100)	%	70
Materials of the components in contact with the measuring media		1.4542
Dead volume	cm ³	0.8
Control volume	mm ³	1.5
Output characteristics		
Nominal (rated) sensitivity	mV/V	2
Sensitivity tolerance	%	< ± 0.15
Temperature coefficient of the zero signal in the nominal temperature range	%/10K	< ± 0.1
in the operating temperature range	%/10K	< ± 0.15
Temperature coefficient of sensitivity in nominal temperature range	%/10K	< ± 0.1
in operating temperature range	%/10K	< ± 0.2
Acceleration sensitivity per 10 m/s ² for exciting frequencies of ≤ 20% of natural frequency	%	< ± 0.001
Characteristic curve deviation (start setting)	%	0.2
Repeatability	%	< ± 0.05
Fundamental resonance frequency	kHz	> 100
Input resistance	Ω	350 ± 5
Output resistance	Ω	350 ± 1.5
Insulation resistance	MΩ	5000
Electrical strength	V	90 (500 V _{eff} in special designs for intrinsically safe circuits)
Auxiliary supply		
Excitation voltage		
Nominal range	V	0.5 ... 12
Operating range	V	0.5 ... 18
Ambient conditions		
Reference temperature	°C	+23
Nominal (rated) temperature range	°C	20 ... +70
Operating temperature range	°C	-40 ... +100
Storage temperature range	°C	-50 ... +100
Impact resistance (tested to DIN 40046)		
Impact acceleration	m/s ²	1000
Impact duration	ms	4
Impact form	-	Half sine wave

Measurement range 0bar ...	bar	2000
Materials of the components in contact with the environment		1.4301 / 1.4541 / 1.4542 / Polyamide / Silicone
Mechanical specifications		
Pressure connection		M12 x 1.5
Electrical connections Connection cable for P3MBP/2KB-PT100 not included in scope of delivery		Cable, 7m long, pigtails Device connector Lemosa FFA.2E.310.CLAC65
Mounting position		any
Dimensions		D25x114
Weight without cable	g	approx. 200
Transducer includes PT100		Resistance PT100 at RT (23°C) 110 Ohm +/- 2 Ohm

Pin assignment



Subject to change without notice.
All specifications refer to our products in general terms.
They do not constitute a warranty of quality and do not
establish liability.

B1502-1.2 en

Hottinger Baldwin Messtechnik GmbH

Postfach 10 01 51, D-64201 Darmstadt, Germany
Im Tiefen See 45, D-64293 Darmstadt, Germany
Tel.: +49 61 51/ 8 03-0; Fax: +49 61 51/ 8039100
E-mail: support@hbm.com www.hbm.com



measurement with confidence