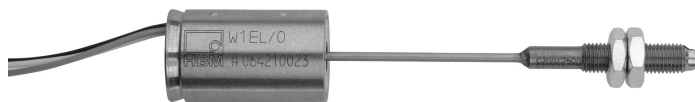


W1EL/0

Inductive Displacement Sensor

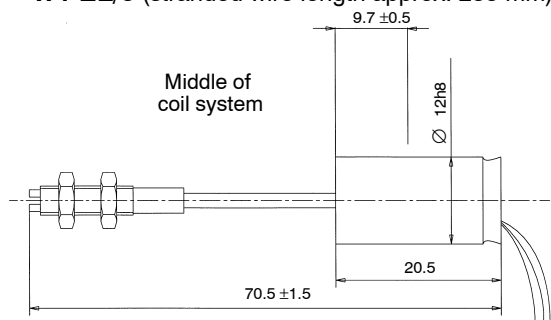


Special features

- Wear-resistant inductive measurement system
- Interchangeability error < 1 %
- Flexible plunger
- With straight-through plunger channel protected against damages due to overstroke
- Summation and subtraction by parallel or antiparallel circuit

Dimensions (in mm; 1 mm= 0.03937 inches)

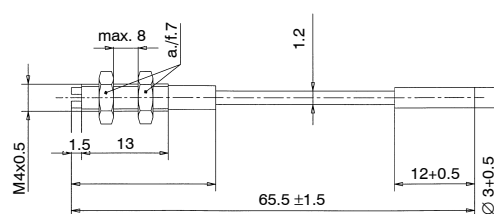
W1 EL/0 (stranded wire length approx. 235 mm)



Plunger in mid position (auxiliary quantity for core assembly, zero balancing see Operating manual)

Dimensional variation to DIN 7168 coarse

Plunger W1EL/0



Specifications

Transducer type		W1EL/0
Nominal displacement (Nominal displ. span)	mm	± 1 (2)
Nominal sensitivity (nominal output signal at nominal displacement, output not loaded)	mV/V	± 80
Sensitivity tolerance (deviation of sensitivity from nominal sensitivity)	%	± 1
Nominal output-signal range	mV/V	160
Temperature effect per 10 K in the nominal temperature range on the sensitivity (rel. to the actual value)	%	± 0.2
on the zero signal (rel. to the nominal sensitivity)	%	± 0.05
Linearity deviation (incl. hysteresis rel. to the nominal output-signal range)	%	± 0.2
Nominal excitation voltage (rms value)	V	2.5 ± 5%
Service range of the excitation voltage	V	1...6
Carrier frequency	kHz	4.8 ¹⁾
Protection to EN 60529		IP 20
Nominal temperature range ¹⁾	°C [°F]	-55...+130 [-67...+266]
Service temperature range ¹⁾	°C [°F]	-200...+130 [-328...+266]
Transducer weight, approx.	g	11
Plunger weight, approx.	g	3

¹⁾ The specified standard connection cables may only be used in the temperature range from -20...+80 °C [-4...176 °F].

Permissible accelerations of the displacement transducers

Transducer type		W1EL/0
Permissible acceleration transducer body	m/s ²	500
Permissible acceleration plunger	m/s ²	1000

Order no.: 1-W1EL/0-2 (0-2 means accuracy class 0.2)

Accessories (to be ordered separately):

WS/ZB12 Mounting set: Mounting-block set for 3 mounting options for 12 mm diameter

Modifications reserved.

All details describe our products in general form only. They are not to be understood as express warranty and do not constitute any liability whatsoever.

Hottinger Baldwin Messtechnik GmbH

Im Tiefen See 45, D-64293 Darmstadt, Germany
Tel.: +49 6151 8030; Fax: +49 6151 803 9100
E-mail: support@hbm.com www.hbm.com



measurement with confidence