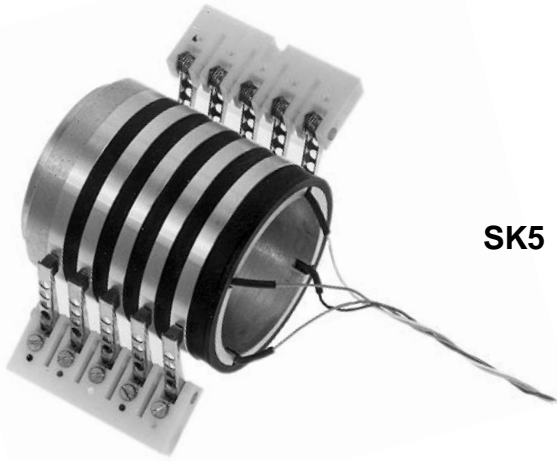


# SK5, SK6, SK12

## Slipring Assemblies



SK5

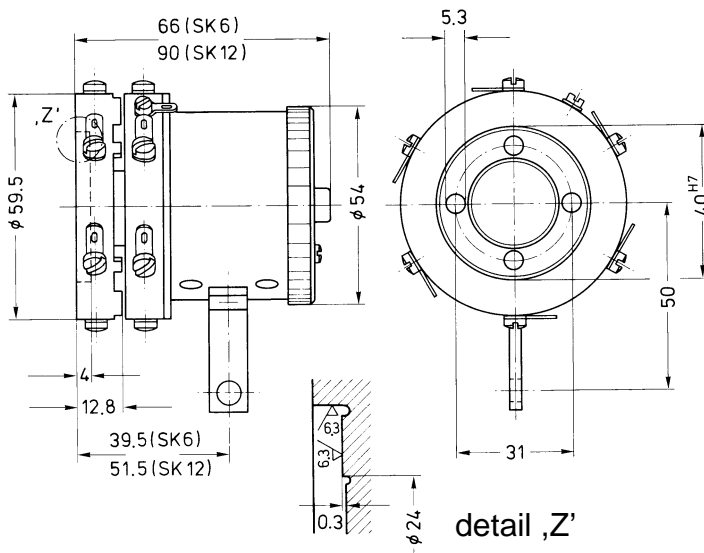


SK6

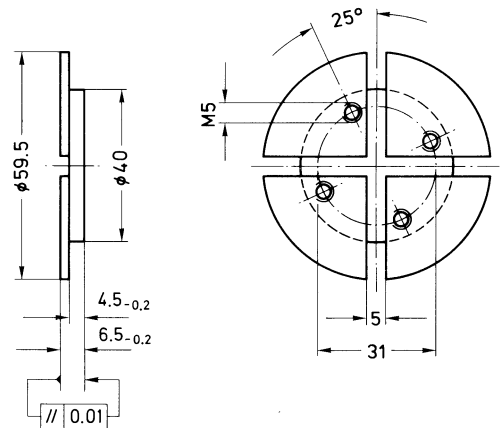
### Special features

- Low wear
- High transmission quality
- SK 6 and SK 12 for mounting to stub shafts with easy-lift brush assemblies
- SK 5 for central mounting on shafts
- Low thermal voltages
- Very low change in contact resistance

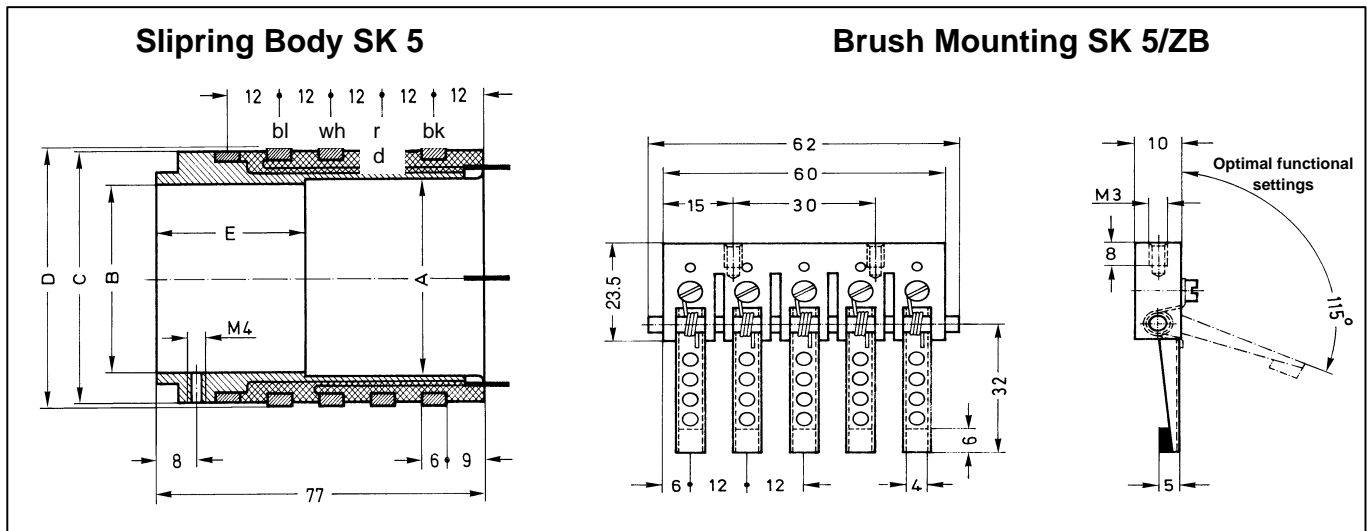
Slipring Heads SK 6 and SK 12



Mounting plate



## Dimensions (in mm, 1mm = 0.03937inches)



Type	Max. shaft- $\varnothing$ in mm	Dimensions in mm					Weight in kg	Permissible speed in $\text{min}^{-1}$	
		$\varnothing B$	$\varnothing A$	$\varnothing C$	$\varnothing D$	E		Continuous operation	Short-term operation
SK 5/40	40	40 <sup>M6</sup>	42	54	55	35	0,23	6000	8000
SK 5/55	55	55 <sup>M6</sup>	55,1	68	69	40	0,31	6000	8000
SK5/95	95	95 <sup>N6</sup>	95,1	115	116	40	0,67	4000	6000

## Specifications

Type		SK 5	SK 6	SK 12
<b>Number of slippings</b>		5	6	12
<b>Resistance</b> between slippings and brush	$\text{m}\Omega$	<40	<40	<40
<b>Fluctuation of the resistance</b>	$\text{m}\Omega$	<2	<2	<2
<b>Thermo-electric voltage</b> measured between two brushes when the slippings are short-circuited (after running warm)	$\mu\text{V}$	<10	<10	<10
<b>Voltage limit</b>	V	60	60	60
<b>Current limit</b>	A	2	2	2
<b>Permitted speed</b> for continuous duty	$\text{min}^{-1}$	4000/6000 <sup>1)</sup>	6000	6000
<b>Permissible vibration</b> , Test severity to <b>DIN 40046, Part 8</b>				
Frequency range	Hz	10...55	5...65	5...65
Duration	h	1.5	0.5	0.5
Acceleration	$\text{m/s}^2$	50	150	150
<b>Mechanical shocktest</b> <sup>2)</sup> Test severity to <b>DIN 40046, Part 26</b>				
Number of shocks		1000	1000	1000
Duration	ms	3	3	3
Acceleration	$\text{m/s}^2$	150	200	200
<b>Moment of mass inertia</b> , $I_x$ (axial)	$\text{gm}^2$		0.082	0.087
<b>Nominal temperature range</b> <sup>3)</sup>	$^{\circ}\text{C}$	-10...+60	-10...+60	-10...+60
<b>Service temperature range</b> <sup>4)</sup>	$^{\circ}\text{C}$	-10...+90	-10...+70	-10...+70
<b>Storage temperature range</b>	$^{\circ}\text{C}$	-50...+90	-50...+90	-50...+90
<b>Weight</b>	kg	see above	approx. 0.55	approx. 0.65

<sup>1)</sup> 4000  $\text{min}^{-1}$  for SK5/95, 6000  $\text{min}^{-1}$  for SK5/40 and SK5/55

<sup>2)</sup> No change in technical data was observed after the shock test.

<sup>3)</sup> Permissible ambient temperature =  $(60 - 0,002 \cdot n) ^{\circ}\text{C}$ ; n in  $\text{min}^{-1}$

<sup>4)</sup> Permissible ambient temperature =  $(70 - 0,002 \cdot n) ^{\circ}\text{C}$ ; n in  $\text{min}^{-1}$

Modifications reserved.  
All details describe our products in general form only. They are not to be understood as express warranty and do not constitute any liability whatsoever.

### Hottinger Baldwin Messtechnik GmbH

Postfach 10 01 51, D-64201 Darmstadt  
Im Tiefen See 45, D-64293 Darmstadt  
Tel.: +49/61 51/ 8 03-0; Fax: +49/61 51/ 8039100  
E-mail: support@hbm.com www.hbm.com



measurement with confidence