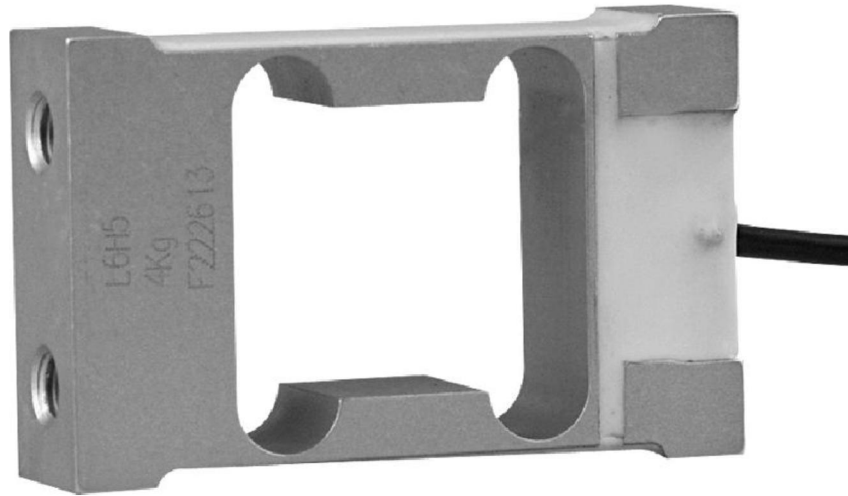


# Type L6H5 Load Cell



## Short description



- Aluminium-alloy IP65 single point load cell.
- Colourless anodized
- Suitable for single or double load cell structured platform scales
- Maximum platform size: 200 x 200 mm



test certificate no. TC7839 Revision 0  
C of C no R60/2000-NL1-10.23

## Available models

Capacity	Accuracy	Full article description
4kg	C3	L6H5-C3-4kg-0.5B
5kg	C3	L6H5-C3-5kg-0.5B
6kg	C3	L6H5-C3-6kg-0.5B
8kg	C3	L6H5-C3-8kg-0.5B
10kg	C3	L6H5-C3-10kg-0.5B
20kg	C3	L6H5-C3-20kg-0.5B
30kg	C3	L6H5-C3-30kg-0.5B

# Type L6H5 Load Cell

## Detailed specifications L6H5

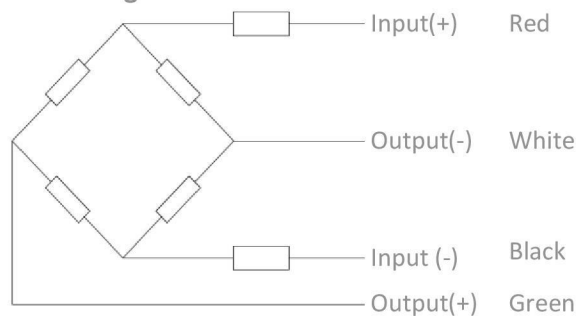
Accuracy class		OIML R60 C3
Output sensitivity ( = FS )	mV/V	2.0 ± 0.2
Maximum capacity ( E <sub>max</sub> )	kg	4, 5, 6, 8, 10, 20, 30
Max.number of load cell intervals	n <sub>LC</sub>	3000
Ratio of min. LC verification interval	$Y = E_{max} / v_{min}$	15000
Combined Error	%FS	≤± 0.0230
Minimum dead load	Of E <sub>max</sub>	0%
Safe overload	of E <sub>max</sub>	150 %
Ultimate overload	of E <sub>max</sub>	300 %
Zero balance	of FS	< ± 2.0 %
Excitation, recommended voltage	V	5 ~ 12
Excitation maximum	V	18
Input resistance	Ω	409 ± 6
Output resistance	Ω	350 ± 3
Insulation resistance	MΩ	≥5000 ( at 50VDC )
Compensated temperature	°C	-10 ~+40
Operating temperature	°C	-35 ~ +65
Storage temperature	°C	-40 ~ +70
Element material		Aluminium
Ingress Protection (acc. to EN 60529)		IP65
Recommended torque on fixation	Nm	M8: 25

## Wiring

### Wiring:

Shielded, 4 conductor cable.  
Cable diameter: Ø3.8mm.  
Standard cable length: 0.5m.  
Shield not connected to element.  
Cable jacket in PVC.

### 4-wire diagram



# Type L6H5 Load Cell

Dimensions in mm

